

Telescopic Lift

Model: EL13T.P\EL15T.P\EL18T.P

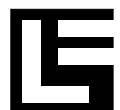


- Telescopic boom mounted on chassis cabs with working basket.
- Used to maintain and repair lampposts and others.
- Boom structure built of high resistance steel.
- Can be equipped with quick connection hydraulic ports.

Technical specifications:

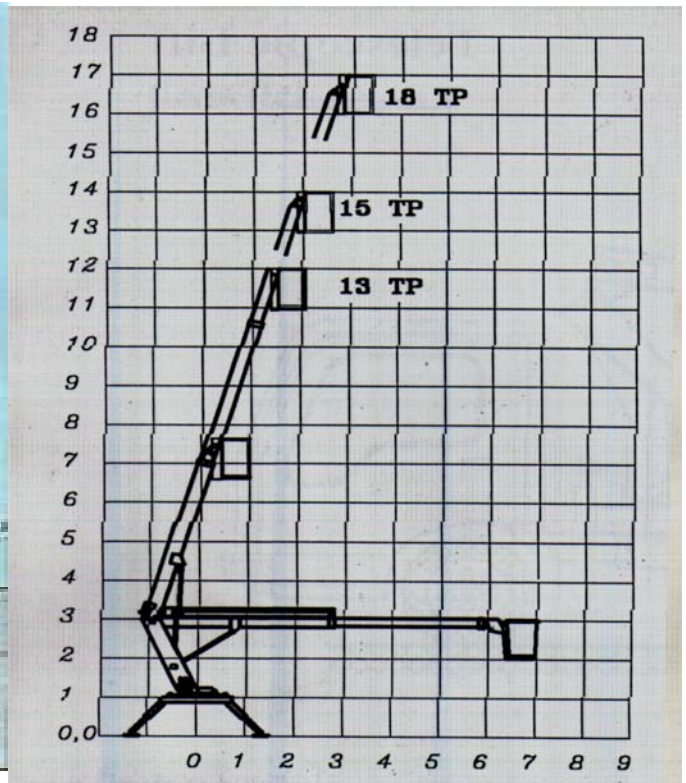
- Working height 13 , 15, 18m
- Basket capacity: 250 kg.
- Size: 110 x 60 x100cm.
- Max. outreach 6-7 m
- Basket insulation 10 K.V
- Rotation: 360°.
- Stability: 4 hydraulic outriggers
- Hand pump for emergency.
- Safety system during operation.
- Hydraulic gear pump directly mounted to truck engine.
- Dual control from ground and basket.
- Oil tank with capacity 60 lit equipped with strainer and temperature level gauge.
- Vertical position for the basket.
- Hydraulic Filter (10 micron)

ELECTROLAB



Telescopic Lift

Model: EL13T.P\EL15T.P\EL18T.P



Options:

- Hook with capacity (6)m. ton.
- Spraying unit (gun + compressor)
- Alarm against inclined platform.
- Spot lights on the basket
- Shock absorber on the stand of the boom
- Fluorescent paint on the boom
- Water tank 1000 liter + water pump.
- Non slip base plate.
- Side boxes.
- Side or rear ladder.
- Hydraulic ports.
- Electric ports (12V).
- Fiberglass basket (60kv).
- Continuous rotation.
- Rotating bicon for alarm.

ELECTROLAB

212, Sudan St. Midan Lebanon Cairo – Egypt
www.electrolabtrucks.com

Tel.: ++20-2- 347 9769/ 347 4236

Fax: ++ 20-2-302 5791

Email: electrolab@electrolabtrucks.com