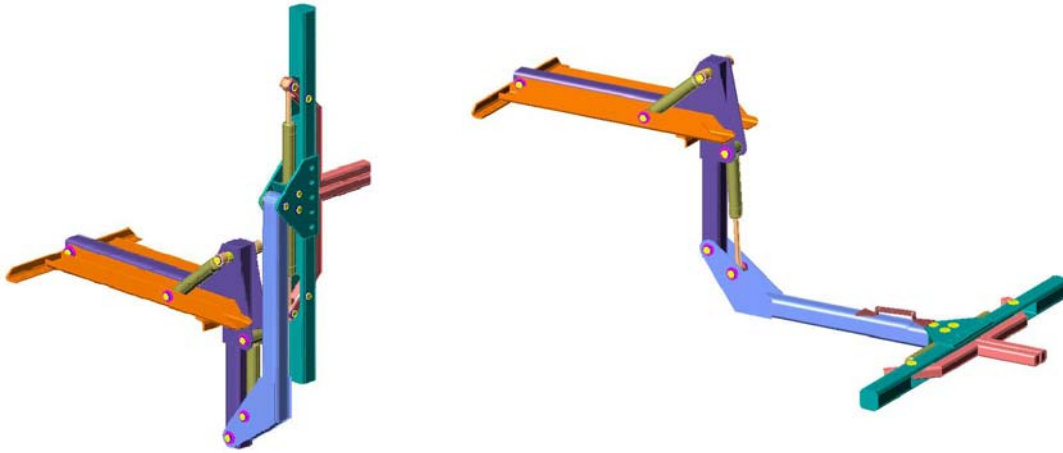


Self Loading Tow Kit

SETK 3



This kit is designed to be installed on any available chassis cab (e.g. Ford F350, Ford F450 or Chevrolet C-3500) converting it into a tow truck. The Kit offers the capabilities of a remotely operated wrecker; the operator stays in his cab and fulfills his tasks in less than half a minute. This way the operator is able to carry out more recoveries per day under better working conditions. This kit is delivered with a DC hydraulic power pack, which applies the plug and play concept. It is easy to install and run allowing you to start your towing business in no time.

<p>1. Boom:</p> <ul style="list-style-type: none"> • Conservatively designed. • Retracted boom lifting capacity 7000 Ib. • Extended boom lifting capacity 4000 Ib. • Retracted boom length 48". • Extended boom length 84". • Distance between centerline of rear axle to tailboard 35.5". • Boom height adjustment via 2 double action hydraulic pistons. 	<ul style="list-style-type: none"> • Extra mechanical lock against hydraulic failure (according to the Egyptian military standards). • Boom is governed by guide for protection against transversal forces. • All hinges pivots are conservatively designed with lubrication inputs. • The tip hinge is 2.5" diameter with brass lining that could be easily replaced. • Power tilt: 30° Up / 10° Down.
<p>2. Cross member:</p> <ul style="list-style-type: none"> • Conservatively designed. • The brackets could easily lock around the car tires. • The pistons are powerful and would withstand misuse by unskilled personnel. 	<ul style="list-style-type: none"> • In case of misuse of brackets and incorrect location, the pistons will not be damaged since the relief valve will open or the pivot will be broken as a final fuse. The driver will usually have a few spare pivots for quick replacement.
<p>3. Hydraulic:</p> <ul style="list-style-type: none"> • Cylinders are reliable. • Valve block is installed on top of the bed behind the boom to simplify service. • Counter balance to ensure safety in case of sudden Hydraulic pressure drop. • Strainer in the hydraulic tank cover. • The hydraulic circuit is operated via an electrically driven power pack. • All the hydraulic cylinder are interchangeable. • The valve could be manually operated from behind the boom. • 2 hydraulic cylinders for lifting. 	<ul style="list-style-type: none"> • Oil level indicator. • Oil temperature gauge. • Oil pressure gauge (Option). • Pressure relief valve. • Alarm for high pressure (Option). • The pressure maximum limit is conservatively designed 2200 PSI to ensure long service life. • Optional hydraulic manual pump. • The PTO unit is controlled from inside the cab. • O/P on both sides to operate hydraulic tools (Option).

ELECTROLAB

212, Sudan St. Midan Lebanon Cairo – Egypt

www.electrolabtrucks.com

Tel.: ++20-2- 347 9769/ 347 4236

Fax: ++ 20-2-302 5791

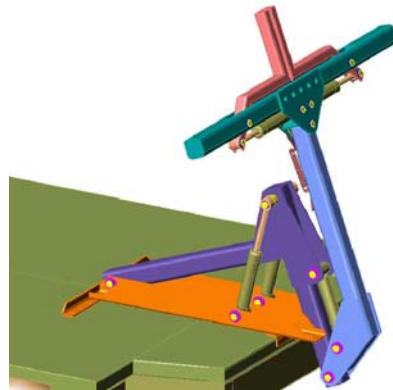
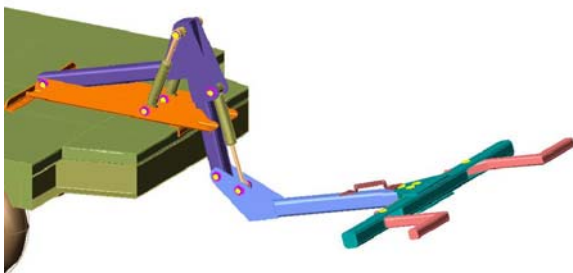
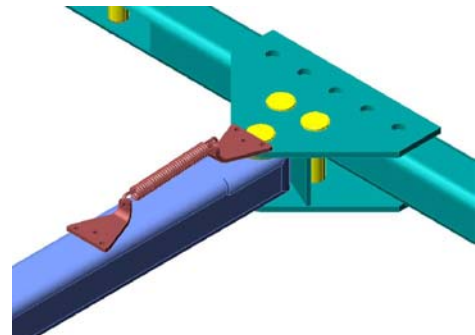
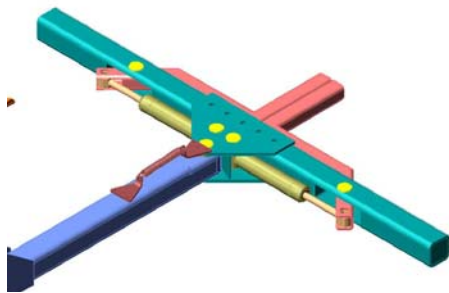
email: electrolab@electrolabtrucks.com



One type of cylinders proves our design capability

(This is to simplify service and reduce inventory of spares)

<p>4. Control:</p> <ul style="list-style-type: none"> • Located in driver cab to ensure complete remote operation from inside of cab. • Modular construction easy to disassemble. 	<ul style="list-style-type: none"> • The valve could be manually operated from behind the boom.
<p>5. Operation:</p> <ul style="list-style-type: none"> • The driver will stay in his warm cab. • The boom will rest near to the ground level. • The driver will reverse towards to the auto. • The brackets will open and lock the front tires. 	<ul style="list-style-type: none"> • The cross member will adjust itself to the front tires. • The main boom will move upwards and the auto will be lifted.
<p>6. Boom Assembly:</p> <ul style="list-style-type: none"> • Possibility to deliver the boom set alone. • To be locally installed on locally made bodies. • Boom is governed by guide for protection against transversal forces. 	<ul style="list-style-type: none"> • Extra simple frame to be added to the boom assembly to be mounted on pickups for private use.
<p>7. Front push bumper (Optional):</p> <ul style="list-style-type: none"> • Suitable for pushing the cars in case of use by police. • 551.15 lb. dead weight for better balancing. 	<ul style="list-style-type: none"> • To avoid backward tilting of the truck when lifting heavy cars.
<p>8. Reliability:</p> <ul style="list-style-type: none"> • Very reliable like our ancient pyramids. • This product proved reliability in the warm and dusty weather of Egypt. • This product withstands rough treatment by unskilled personnel. 	<ul style="list-style-type: none"> • We use American made hydraulics. • Cylinders and rods by SCOTT. • Electric hydraulic valve by PRINCE. • Seals of the cylinders by PARKER. • PTO from MISSIE (if we supply). • Pump from MISSIE (if we supply).
<p>9. Paint:</p> <ul style="list-style-type: none"> • Primary after sand blasting. 	<ul style="list-style-type: none"> • 2 Layers of paint according to customer colors.
<p>10. Service:</p> <ul style="list-style-type: none"> • Parts are available through our dealers. 	<ul style="list-style-type: none"> • Very rarely we are asked for spares.



ELECTROLAB

212, Sudan St. Midan Lebanon Cairo – Egypt

www.electrolabtrucks.com

Tel.: ++20-2- 347 9769/ 347 4236

Fax: ++ 20-2-302 5791

email: electrolab@electrolabtrucks.com

